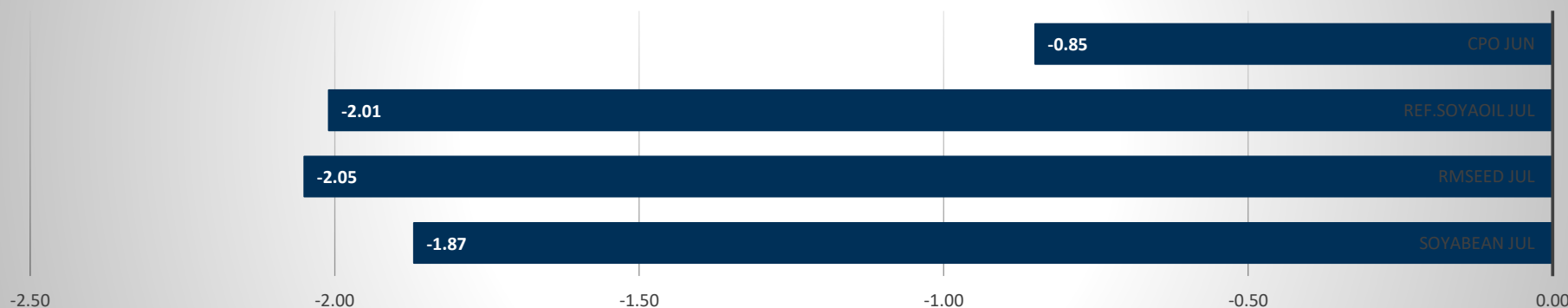


Commodity	Open	High	Low	Close	Rs.Chg	% Chg	Spot	Vol	OI	OI Chg	OI STATUS
Soyabean Jul	6840.00	6939.00	6720.00	6780.00	-129.00	-1.87	7398.00	21095	34850	7.28	Fresh Selling
Rmseed Jul	7000.00	7019.00	6815.00	6843.00	-143.00	-2.05	7200.00	43970	60250	-0.94	Long Liquidation
Ref.Soyaoil Jul	1365.00	1373.60	1328.20	1334.80	-27.40	-2.01	1401.80	39305	35480	19.70	Fresh Selling
Cpo Jun	1103.60	1114.00	1085.20	1090.80	-9.30	-0.85	1138.80	3999	3947	-5.28	Long Liquidation

Commodity	Daily Levels								Trend	Performance			
	Close	Res - 3	Res - 2	Res - 1	Pivot	Sup - 1	Sup - 2	Sup - 3		1 Week	1 Month	3 Month	1 Year
Soyabean Jul	6780.00	7125.0	7032.0	6906.0	6813.0	6687.0	6594.0	6468.0	Negative	0.69	-4.25	26.22	43.22
Rmseed Jul	6843.00	7173.0	7096.0	6969.0	6892.0	6765.0	6688.0	6561.0	Negative	-2.28	-2.76	21.26	33.49
Ref.Soyaoil Jul	1334.80	1410.0	1392.0	1364.0	1346.0	1318.0	1300.0	1272.0	Negative	-1.62	-3.89	12.86	40.44
Cpo Jun	1090.80	1137.0	1125.5	1108.2	1096.7	1079.4	1067.9	1050.6	Negative	-8.06	-10.03	3.74	40.07

## Price Movement



## DAILY SOYABEAN SYNOPSIS

Expiry	Open	High	Low	Close	Rs.Chg	% Chg	Spot	Vol	OI	OI Chg	Fut-Spot	OI STATUS
20 JUL 2021	6840.00	6939.00	6720.00	6780.00	-129.00	-1.87	7398.00	21095	34850	7.28	-618.00	Fresh Selling
20 AUG 2021	6565.00	6605.00	6460.00	6492.00	-138.00	-2.08	7398.00	880	3770	6.05	-906.00	Fresh Selling
20 SEP 2021	0.00	0.00	0.00	6223.00	0.00	0.00	7398.00	0	100	0.00	-1175.00	Long Liquidation

- Soyabean trading range for the day is 6594-7032.
- Soyabean prices dropped as India's soybean planting could rise by over 10% on record prices
- China Jan-May soybean imports up 12.8% at 38.23 million tonnes
- Indian farmers are likely to expand their soybean planting area by more than a tenth in 2021
- At the Indore spot market in top producer MP, soybean dropped -82 Rupees to 7398 Rupees per 100 kgs.

### CHART



### TECHNICALS

#### Simple Moving Average

5 Days	10 Days	20 Days	50 Days	100 Days	200 Days
6768	6789	6906	6692	5775	4982
SELL	SELL	SELL	BUY	BUY	BUY

#### Exponential Moving Average

5 Days	10 Days	20 Days	50 Days	100 Days	200 Days
6788	6803	6827	6557	5999	5322
SELL	SELL	SELL	BUY	BUY	BUY

#### Spread

Month	Rate	JUL	AUG	SEP
JUL	6780		-288	-557
AUG	6492			-269
SEP	6223			

## DAILY RMSEED SYNOPSIS

Expiry	Open	High	Low	Close	Rs.Chg	% Chg	Spot	Vol	OI	OI Chg	Fut-Spot	OI STATUS
15 JUL 2021	7000.00	7019.00	6815.00	6843.00	-143.00	-2.05	7200.00	43970	60250	-0.94	-357.00	Long Liquidation
20 AUG 2021	7015.00	7030.00	6739.00	6844.00	-165.00	-2.35	7200.00	7850	13360	-1.62	-356.00	Long Liquidation
20 SEP 2021	7038.00	7071.00	6863.00	6903.00	-141.00	-2.00	7200.00	3090	6270	8.85	-297.00	Fresh Selling

- Rmseed trading range for the day is 6688-7096.
- Mustard seed dropped as U.S. rapeseed production is forecast to reach a record 1.8 million tons on record area and trend yield.
- Canada rapeseed production is projected at 20.5 million tons, up 1.5 million on greater area.
- The arrival of mustard in the mandis has decreased at all places in the country.
- In Alwar spot market in Rajasthan the prices gained 50 Rupees to end at 7200 Rupees per 100 kg.

## CHART



## TECHNICALS

### Simple Moving Average

5 Days	10 Days	20 Days	50 Days	100 Days	200 Days
7059	7052	7172	6779	6075	5855
SELL	SELL	SELL	BUY	BUY	BUY

### Exponential Moving Average

5 Days	10 Days	20 Days	50 Days	100 Days	200 Days
7062	7073	7066	6776	6369	5895
SELL	SELL	SELL	BUY	BUY	BUY

### Spread

Month	Rate	JUL	AUG	SEP
JUL	6843		1	60
AUG	6844			59
SEP	6903			

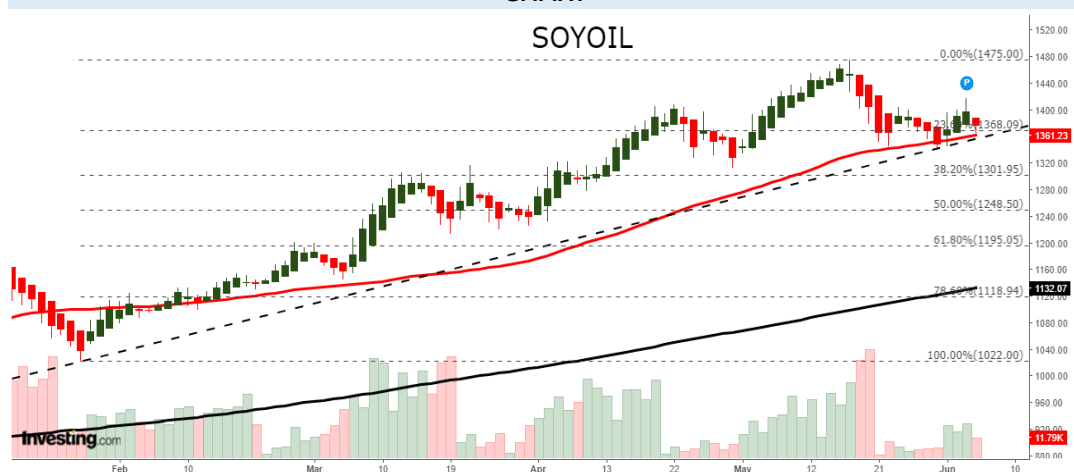
## DAILY SOYOIL SYNOPSIS

Expiry	Open	High	Low	Close	Rs.Chg	% Chg	Spot	Vol	OI	OI Chg	Fut-Spot	OI STATUS
15 JUL 2021	1365.00	1373.60	1328.20	1334.80	-27.40	-2.01	1401.80	39305	35480	19.70	-67.00	Fresh Selling
20 AUG 2021	1342.00	1350.50	1313.00	1315.80	-25.70	-1.92	1401.80	1865	2135	75.00	-86.00	Fresh Selling
20 SEP 2021	0.00	0.00	0.00	1346.00	0.00	0.00	1401.80	0	5	0.00	-55.80	Long Liquidation

- Ref.Soya oil trading range for the day is 1300-1392.
- Ref soyoil dropped on profit booking tracking weakness in soyabean prices after seen supported on concerns about tight global supplies of edible oils.
- India is considering reducing import taxes on edible oils after cooking oil prices hit record highs last month
- Indian farmers are likely to expand their soybean planting area by more than a tenth in 2021
- At the Indore spot market in Madhya Pradesh, soyoil was steady at 1401.8 Rupees per 10 kgs.

### CHART

#### SOYOIL



### TECHNICALS

#### Simple Moving Average

5 Days	10 Days	20 Days	50 Days	100 Days	200 Days
1379.1	1378.7	1392.8	1354.9	1256.8	1129.2
BUY	BUY	SELL	BUY	BUY	BUY

#### Exponential Moving Average

5 Days	10 Days	20 Days	50 Days	100 Days	200 Days
1382.0	1381.8	1381.1	1346.9	1275.2	1162.7
BUY	BUY	BUY	BUY	BUY	BUY

#### Spread

Month	Rate	JUL	AUG	SEP
JUL	1334.8		-19.0	11.2
AUG	1315.8			30.2
SEP	1346.0			

## DAILY CRUDE PALM OIL SYNOPSIS

Expiry	Open	High	Low	Close	Rs.Chg	% Chg	Spot	Vol	OI	OI Chg	Fut-Spot	OI STATUS
15 JUL 2021	1103.60	1114.00	1085.20	1090.80	-9.30	-0.85	1138.80	3999	3947	-5.28	-48.00	Long Liquidation
30 JUL 2021	1083.10	1093.00	1066.10	1070.70	-6.20	-0.58	1138.80	1634	2372	13.49	-68.10	Fresh Selling
31 AUG 2021	1060.60	1075.90	1054.20	1056.50	-9.20	-0.86	1138.80	95	158	35.04	-82.30	Fresh Selling

- CPO trading range for the day is 1067.9-1125.5.
- Crude palm oil dropped dragged down by expectations of rising production and stocks ahead of official data.
- May palm oil stocks rose 1.5% to 1.57 mln T – MPOB
- Crude palm oil production gained 2.84% from April to 1.57 million tonnes, while palm oil exports fell 6.01% to 1.27 million tonnes
- In spot market, Crude palm oil dropped by -0.5 Rupees to end at 1138.8 Rupees.

### CHART



### TECHNICALS

#### Simple Moving Average

5 Days	10 Days	20 Days	50 Days	100 Days	200 Days
1145.8	1166.3	1200.1	1184.0	1109.4	982.9
SELL	SELL	SELL	SELL	BUY	BUY

#### Exponential Moving Average

5 Days	10 Days	20 Days	50 Days	100 Days	200 Days
1145.7	1163.3	1180.8	1170.4	1113.8	1011.8
SELL	SELL	SELL	SELL	BUY	BUY

#### Spread

Month	Rate	JUN	JUL	AUG
JUN	1090.8		-20.1	-34.3
JUL	1070.7			-14.2
AUG	1056.5			

## SOYABEAN PRICE MOVEMENT SINCE 2012

Year						Sowing	Growth	Harvesting					Crop Calendar
	JAN	FEB	MAR	APR	MAY	JUN	JUL	AUG	SEP	OCT	NOV	DEC	
2012	2451.50	2668.50	3085.50	3625.00	3404.00	3968.50	4370.50	3947.50	3201.50	3298.00	3209.50	3203.00	689.00
	-2.49	8.85	15.63	17.49	-6.10	16.58	10.13	-9.68	-18.90	3.01	-2.68	-0.20	27.41
2013	3287.50	3324.50	3641.00	3932.00	3810.00	3670.50	2973.00	3470.00	3531.00	3925.00	3860.00	3819.00	616.00
	2.64	1.13	9.52	7.99	-3.10	-3.66	-19.00	16.72	1.76	11.16	-1.66	-1.06	19.23
2014	3926.50	4165.00	4311.50	4777.50	4592.00	4094.00	3639.00	3358.00	2963.00	3289.00	3300.00	3366.00	-453.00
	2.81	6.07	3.52	10.81	-3.88	-10.84	-11.11	-7.72	-11.76	11.00	0.33	2.00	-11.86
2015	3434.00	3406.00	3458.00	4025.00	3890.00	3329.00	3160.00	3218.00	3429.00	3909.00	3907.00	3880.00	514.00
	2.02	-0.82	1.53	16.40	-3.35	-14.42	-5.08	1.84	6.56	14.00	-0.05	-0.69	15.27
2016	3726.00	3664.00	4010.00	3927.00	3835.00	3740.00	3557.00	3257.00	3235.00	3114.00	3116.00	3029.00	-851.00
	-3.97	-1.66	9.44	-2.07	-2.34	-2.48	-4.89	-8.43	-0.68	-3.74	0.06	-2.79	-21.93
2017	3092.00	3007.00	2941.00	3002.00	2762.00	2925.00	3154.00	3097.00	3033.00	2823.00	3098.00	3118.00	89.00
	2.08	-2.75	-2.19	2.07	-7.99	5.90	7.83	-1.81	-2.07	-6.92	9.74	0.65	2.94
2018	3685.00	3802.00	3756.00	3669.00	3549.00	3566.00	3392.00	3222.00	3233.00	3269.00	3354.00	3399.00	281.00
	18.18	3.18	-1.21	-2.32	-3.27	0.48	-4.88	-5.01	0.34	1.11	2.60	1.34	9.01
2019	3826.00	3637.00	3681.00	3676.00	3718.00	3671.00	3582.00	3825.00	3939.00	3863.00	4072.00	4436.00	1037.00
	12.56	-4.94	1.21	-0.14	1.14	-1.26	-2.42	6.78	2.98	-1.93	5.41	8.94	30.51
2020	4084.00	3708.00	3796.00	3810.00	3830.00	3714.00	3780.00	4116.00	3866.00	4263.00	4415.00	4606.00	170.00
	-7.94	-9.21	2.37	0.37	0.52	-3.03	1.78	8.89	-6.07	10.27	3.57	4.33	3.83
2021	4644.00	5078.00	5993.00	7107.00	6873.00								2267.00
	0.83	9.35	18.02	18.59	-3.29								49.22
Average	1.48	0.61	4.39	6.05	-2.92	-1.85	-1.23	-0.14	-3.80	4.69	1.94	2.82	Average

## RMSEED PRICE MOVEMENT SINCE 2012

Year	Growth		Harvesting										Sowing			Crop Calendar
	JAN	FEB	MAR	APR	MAY	JUN	JUL	AUG	SEP	OCT	NOV	DEC				
2012	3346.00 1.06	3632.00 8.55	3925.00 8.07	4130.00 5.22	3901.00 -5.54	3990.00 2.28	4397.00 10.20	4452.00 1.25	3927.00 -11.79	4269.00 8.71	4214.00 -1.29	3544.00 -15.90	233.00 7.04			
2013	3492.00 -1.47	3428.00 -1.83	3479.00 1.49	3505.00 0.75	3514.00 0.26	3451.00 -1.79	3182.00 -7.79	3571.00 12.23	3641.00 1.96	3878.00 6.51	3811.00 -1.73	3469.00 -8.97	-75.00 -2.12			
2014	3353.00 -3.34	3537.00 5.49	3504.00 -0.93	3594.00 2.57	3456.00 -3.84	3595.00 4.02	3641.00 1.28	3592.00 -1.35	3693.00 2.81	3763.00 1.90	3885.00 3.24	3524.00 -9.29	55.00 1.59			
2015	3378.00 -4.14	3406.00 0.83	3411.00 0.15	3869.00 13.43	4306.00 11.29	4255.00 -1.18	4232.00 -0.54	4317.00 2.01	4514.00 4.56	4923.00 9.06	4897.00 -0.53	4244.00 -13.33	720.00 20.43			
2016	3877.00 -8.65	3929.00 1.34	4202.00 6.95	4472.00 6.43	4503.00 0.69	4848.00 7.66	4875.00 0.56	4681.00 -3.98	4642.00 -0.83	4498.00 -3.10	4876.00 8.40	3974.00 -18.50	604.00 14.23			
2017	3834.00 -3.52	3848.00 0.37	3908.00 1.56	3759.00 -3.81	3483.00 -7.34	3609.00 3.62	3699.00 2.49	3771.00 1.95	3739.00 -0.85	3897.00 4.23	4104.00 5.31	3939.00 -4.02	-35.00 -0.88			
2018	4187.00 6.30	4125.00 -1.48	4054.00 -1.72	3795.00 -6.39	3958.00 4.30	4027.00 1.74	4214.00 4.64	4070.00 -3.42	4241.00 4.20	4170.00 -1.67	3977.00 -4.63	3929.00 -1.21	-10.00 -0.25			
2019	3983.00 1.37	3840.00 -3.59	3750.00 -2.34	3744.00 -0.16	3718.00 -0.69	3939.00 5.94	3950.00 0.28	3922.00 -0.71	3954.00 0.82	4306.00 8.90	4321.00 0.35	4658.00 7.80	729.00 18.55			
2020	4109.00 -11.79	4000.00 -2.65	4118.00 2.95	4141.00 0.56	4490.00 8.43	4650.00 3.56	5014.00 7.83	5410.00 7.90	5468.00 1.07	6067.00 10.95	5871.00 -3.23	5817.00 -0.92	1159.00 24.88			
2021	5604.00 -3.66	5536.00 -1.21	5682.00 2.64	6871.00 20.93	6998.00 1.85								1181.00 20.30			
Average	-2.47	0.32	1.13	3.81	1.30	2.44	2.29	1.52	-0.27	5.41	0.88	-6.07	Average			

## SOYOIL PRICE MOVEMENT SINCE 2012

	JAN	FEB	MAR	APR	MAY	JUN	JUL	AUG	SEP	OCT	NOV	DEC	Growth
2012	683.15	712.75	751.40	775.70	735.65	761.50	784.85	792.20	663.20	686.70	720.25	695.80	-37.70
	-6.86	4.33	5.42	3.23	-5.16	3.51	3.07	0.94	-16.28	3.54	4.89	-3.39	-5.52
2013	737.35	680.85	688.10	719.30	715.05	673.00	651.95	703.20	686.20	748.85	713.80	698.10	2.30
	5.97	-7.66	1.06	4.53	-0.59	-5.88	-3.13	7.86	-2.42	9.13	-4.68	-2.20	0.31
2014	683.55	716.65	705.45	718.50	676.60	693.45	676.60	610.65	614.00	599.85	576.80	638.05	-60.05
	-2.08	4.84	-1.56	1.85	-5.83	2.49	-2.43	-9.75	0.55	-2.30	-3.84	10.62	-8.79
2015	620.10	595.40	583.60	582.50	613.00	588.15	574.70	574.15	598.05	611.30	619.65	614.50	-23.55
	-2.81	-3.98	-1.98	-0.19	5.24	-4.05	-2.29	-0.10	4.16	2.22	1.37	-0.83	-3.80
2016	610.10	617.40	642.50	657.60	656.95	644.10	631.30	645.95	661.45	674.30	727.65	706.95	92.45
	-0.72	1.20	4.07	2.35	-0.10	-1.96	-1.99	2.32	2.40	1.94	7.91	-2.84	15.15
2017	686.10	664.35	623.10	610.85	622.80	641.90	657.35	664.05	664.70	686.10	746.45	727.50	20.55
	-2.95	-3.17	-6.21	-1.97	1.96	3.07	2.41	1.02	0.10	3.22	8.80	-2.54	3.00
2018	743.85	760.85	786.85	764.75	776.40	756.20	742.30	739.75	748.30	754.85	719.95	730.10	2.60
	2.25	2.29	3.42	-2.81	1.52	-2.60	-1.84	-0.34	1.16	0.88	-4.62	1.41	0.35
2019	775.80	756.85	728.75	740.05	755.30	745.10	733.90	755.05	764.50	773.65	814.40	933.20	203.10
	6.26	-2.44	-3.71	1.55	2.06	-1.35	-1.50	2.88	1.25	1.20	5.27	14.59	26.18
2020	851.20	767.60	828.00	787.20	785.20	799.10	864.70	892.90	904.10	963.40	1072.30	1190.10	256.90
	-8.79	-9.82	7.87	-4.93	-0.25	1.77	8.21	3.26	1.25	6.56	11.30	10.99	30.18
2021	1105.50	1192.40	1269.50	1360.70	1365.60								175.50
	-7.11	7.86	6.47	7.18	0.36								15.88
Average	-1.16	-1.01	0.93	1.39	0.43	-0.90	0.48	0.79	-1.49	2.70	2.90	4.14	Average



## CPO PRICE MOVEMENT SINCE 2012

	JAN	FEB	MAR	APR	MAY	JUN	JUL	AUG	SEP	OCT	NOV	DEC	Growth
2012	514.20	536.20	592.30	621.50	585.90	566.40	564.40	551.60	446.20	425.20	423.20	417.90	-127.50
	-5.72	4.28	10.46	4.93	-5.73	-3.33	-0.35	-2.27	-19.11	-4.71	-0.47	-1.25	-23.38
2013	438.20	450.80	454.90	464.90	480.50	502.20	496.60	568.70	532.40	557.20	558.30	540.20	122.30
	4.86	2.88	0.91	2.20	3.36	4.52	-1.12	14.52	-6.38	4.66	0.20	-3.24	29.27
2014	524.00	590.00	569.70	567.70	524.90	535.00	539.10	439.60	474.50	457.20	439.50	460.60	-79.60
	-3.00	12.60	-3.44	-0.35	-7.54	1.92	0.77	-18.46	7.94	-3.65	-3.87	4.80	-14.74
2015	425.00	466.10	434.40	435.40	456.80	451.40	417.60	360.50	425.70	400.80	382.40	411.00	-49.60
	-7.73	9.67	-6.80	0.23	4.92	-1.18	-7.49	-13.67	18.09	-5.85	-4.59	7.48	-10.77
2016	432.50	481.90	532.20	564.00	537.00	506.80	524.70	559.10	581.60	514.90	554.70	582.70	171.70
	5.23	11.42	10.44	5.98	-4.79	-5.62	3.53	6.56	4.02	-11.47	7.73	5.05	41.78
2017	587.50	544.90	538.80	516.80	512.70	490.80	488.70	518.20	547.80	545.30	589.60	554.60	-28.10
	0.82	-7.25	-1.12	-4.08	-0.79	-4.27	-0.43	6.04	5.71	-0.46	8.12	-5.94	-4.82
2018	560.60	587.50	651.80	642.60	653.10	643.40	616.80	599.50	594.00	593.50	500.70	511.60	-43.00
	1.08	4.80	10.94	-1.41	1.63	-1.49	-4.13	-2.80	-0.92	-0.08	-15.64	2.18	-7.75
2019	569.40	550.10	525.90	529.70	519.30	515.80	513.60	522.20	546.60	587.90	680.00	795.20	283.60
	11.30	-3.39	-4.40	0.72	-1.96	-0.67	-0.43	1.67	4.67	7.56	15.67	16.94	55.43
2020	771.80	648.60	663.50	609.00	658.20	646.20	731.80	764.90	754.90	817.50	883.70	977.80	182.60
	-2.94	-15.96	2.30	-8.21	8.08	-1.82	13.25	4.52	-1.31	8.29	8.10	10.65	22.96
2021	969.30	1059.10	1076.30	1155.70	1122.70								144.90
	-0.87	9.26	1.62	7.38	-2.86								14.82
Average	0.52	2.25	1.41	0.86	-0.26	-2.27	0.55	-0.33	1.08	-0.68	2.22	4.38	Average

The logo for KEDIA ADVISORY is displayed within a dark blue rectangular box. The word "KEDIA" is written in a bold, yellow, sans-serif font, and the word "ADVISORY" is written in a white, sans-serif font to its right.

KEDIA STOCKS & COMMODITIES RESEARCH PVT LTD.  
Mumbai. INDIA.

For more details, please contact:  
Mobile: +91 9323406035 / 9320096333 / 9619551022  
Email: [info@kediaadvisory.com](mailto:info@kediaadvisory.com)  
URL: [www.kediaadvisory.com](http://www.kediaadvisory.com)  
SEBI REGISTRATION NUMBER - INH000006156

General Disclaimers: This Report is prepared and distributed by Kedia Stocks & Commodities Research Pvt Ltd. for information purposes only. The recommendations, if any, made herein are expression of views and/or opinions and should not be deemed or construed to be neither advice for the purpose of purchase or sale through KSCRPL nor any solicitation or offering of any investment /trading opportunity. These information / opinions / views are not meant to serve as a professional investment guide for the readers. No action is solicited based upon the information provided herein. Recipients of this Report should rely on information/data arising out of their own investigations. Readers are advised to seek independent professional advice and arrive at an informed trading/investment decision before executing any trades or making any investments. This Report has been prepared on the basis of publicly available information, internally developed data and other sources believed by KSCRPL to be reliable. KSCRPL or its directors, employees, affiliates or representatives do not assume any responsibility for, or warrant the accuracy, completeness, adequacy and reliability of such information / opinions / views. While due care has been taken to ensure that the disclosures and opinions given are fair and reasonable, none of the directors, employees, affiliates or representatives of KSCRPL shall be liable for any direct, indirect, special, incidental, consequential, punitive or exemplary damages, including lost profits arising in any way whatsoever from the information / opinions / views contained in this Report. The possession, circulation and/or distribution of this Report may be restricted or regulated in certain jurisdictions by appropriate laws. No action has been or will be taken by KSCRPL in any jurisdiction (other than India), where any action for such purpose(s) is required. Accordingly, this Report shall not be possessed, circulated and/ or distributed in any such country or jurisdiction unless such action is in compliance with all applicable laws and regulations of such country or jurisdiction. KSCRPL requires such recipient to inform himself about and to observe any restrictions at his own expense, without any liability to KSCRPL. Any dispute arising out of this Report shall be subject to the exclusive jurisdiction of the Courts in India.